

Visual DBU

Administration of Data Tables

Visual DBU is a tool for administration of data tables / databases. It was developed with Xbase++ of Alaska Software Inc. and the libraries **XClass++** and **AdsClass++**.

Range of functions:

- available in German and English language
- opening by drag&drop possible
- maintenance of table structure and indexes
- supports OEM (DOS) and ANSI (Windows) character set
- constructions of relations
- setting of filter and scopes
- Sum() and Count() evaluations
- incremental search and locate
- SQL query dialog
- data-import and -export cross over different table formats with filter and field assignment
- individual design of data columns
- save and restore of views with filter, indexes, relations
- repository for free tables, ADS, ODBC and PostgreSQL
- user administration with grants

Supported data formats and databases:

- Dbase DBF / NTX with DBT
- Dbase DBF / CDX with FPT
- FoxPro DBF up from vVer. 3.0 and VisualFoxPro files up from vers. 5.0
- SDF and CSV text files
- ODBC, access to all installed ODBC drivers, (thus also to Access, Excel, MS-SQL, MySql, aso.)
- native access on PostgreSQL databases
- Advantage Database Server* and ADS Local Engine, all versions
- all ADS tables: DBF, FOX, VFP, ADT
- ADS SQL queries
- ADS ADD satadictionary
- ADS management display

* a DBMS of Sybase/SAP

Settings:

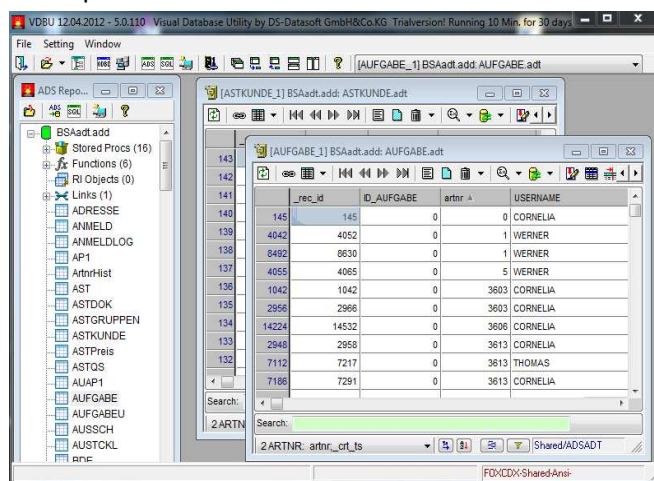
- display of deleted records on/off
- display of century on/off
- softseek on/off
- Rushmore filter technic on/off
- Smartfilter on/off
- incremental search on/off. If a keystroke is done during displaying a data browse, a search ensues with the entered key
- quickedit on/off, a keystroke opens at once the edit mode of cell
- directedit on/off, if the edit of a cell is finished the cursor jumps to the next cell and continues the edit process
- cell preview on/off, if the cell contents does not fit into the cell's width, it will be displayed as tooltip
- global setting for font and color
- default database driver and file extension

Administration:

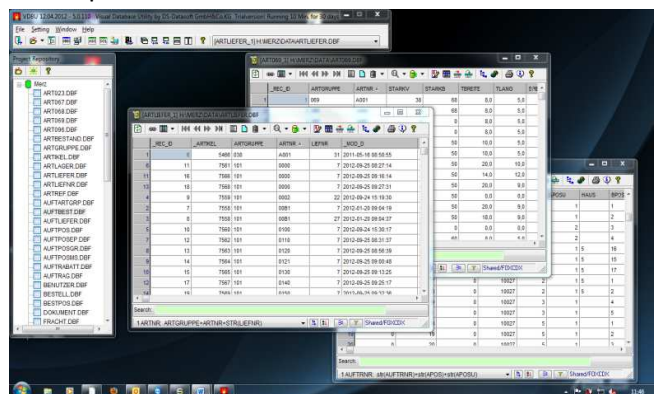
- setting user grants
- registration of additional DLLs with user specific enhancements (Xbase++ DLL)

Visual DBU can be used in two different ways:

MDI Splitter



Desktop mode



➤ The **repository** is grouped into 3 tabs

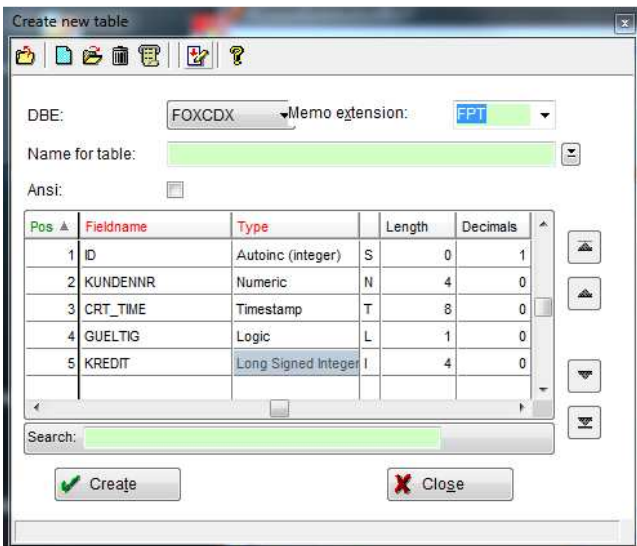


- **Projects** manage the assigned tables with their indexes. Especially with DBFNTX it is ensured that all registered index files of a table will be opened.
- **ADS** lists the created connections to ADS databases. Also SQL queries can be started.
- **ODBC** lists the created connections to ODBC databases. All tables of a connection can be listed inside the explorer and can be opened directly (depending from the database). Further SQL queries can be started.

➤ **Table View**

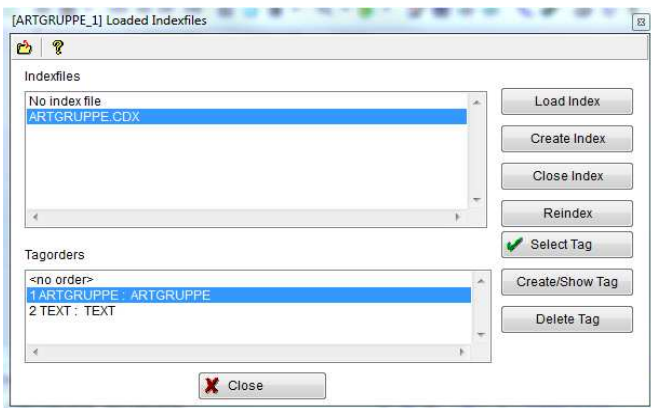
An opened table can be handled:

- modify table structure
- all data types of the data format can be used



The structure can be printed or copied as text into the clipboard

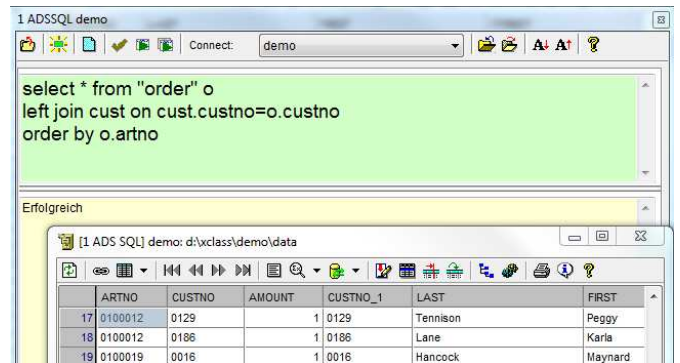
○ **Creating indexes**



- table – and index filter
- record- and table operations for delete, undelete, global replace, pack and clear
- maintenance of index files and reindex
- print table contents with layout
- table view: the queue and the selection of visible fields, filter, indexes etc. can be saved and restored
- display of record with all fields inside an separat edit window

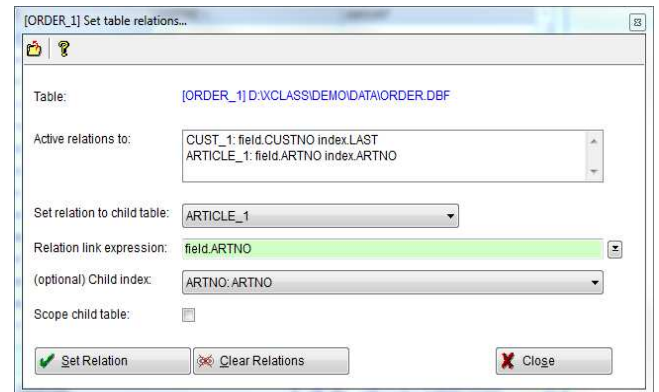
➤ **SQL queries**

In the SQL editor the Sql script can be validated, saved and loaded



➤ **Relations**

There can be established any number of relations between the opened tables.



➤ **Workspace**

Save and restore of one or all tables with the current indices, filter, relations and views.

➤ **Import, Export**

Data of all supported formats can be imported or exported, whereby source and target can be different formats, too. The data can be as well filtered and converted.

A trialversion with complete functionality and documentation can be downloaded from

www.ds-datasoft.de



DS-Datasoft GmbH&Co.KG

An der Kirche 5

D-87654 Friesenried

Tel. (+49) 8347 981370

info@ds-datasoft.de