



PointSync Mobility Platform Data Sheet

Mobilizing Business Processes since 2000

MobileDataforce's PointSync Mobility Platform offers a complete solution for mobile application design, development and deployment.

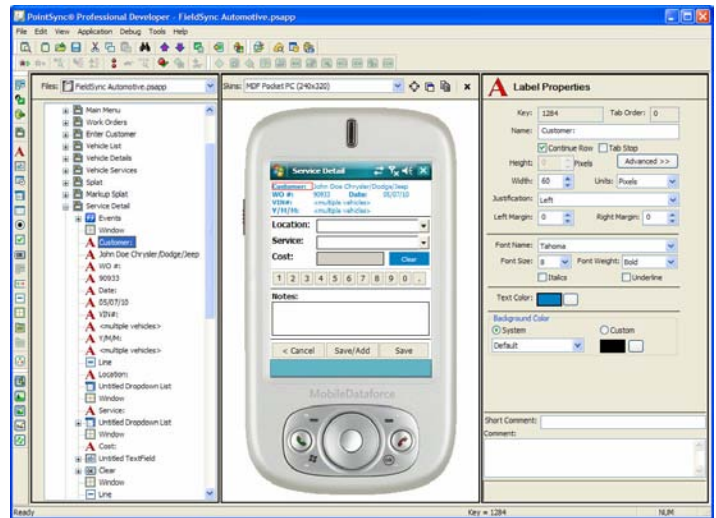
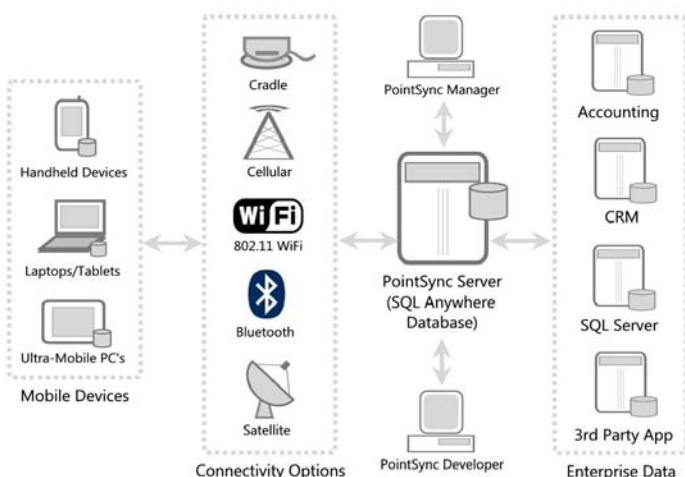
Deploying mobile software applications on handheld computers can provide increased productivity, accountability and improved customer service. The challenge is finding a mobile solution that fits your budget and your specific business processes. PointSync allows you to customize your mobile software applications specifically to your business. PointSync simplifies the design, development and deployment of mobile service orders, inspections, asset tracking, route/accounting and much more. Companies can be more efficient by synchronizing data between the office and the mobile workers using the PointSync Mobility Platform.

The PointSync Mobility Platform is a set of software components that together comprise a complete mobility system. **PointSync Developer** is used to convert paper processes into a mobile application that can run on Windows Mobile devices, or on Windows tablets and notebook computers. Mobile applications you create can save and display data and then synchronize with your enterprise database systems when a connection is available.

PointSync Manager is the software application used to configure the way data synchronizes with mobile devices, and sets links between the PointSync system and your enterprise database. This point-and-click configuration can eliminate months from your development project by generating synchronization scripts and installing them on the

See Reverse ⇨

PointSync Architecture Diagram



PointSync Developer creates applications for Windows-powered mobile devices, laptops, tablets and ultra-mobile PC's. Built-in device skins show realistic views of the functioning application.

PointSync Developer Feature Summary

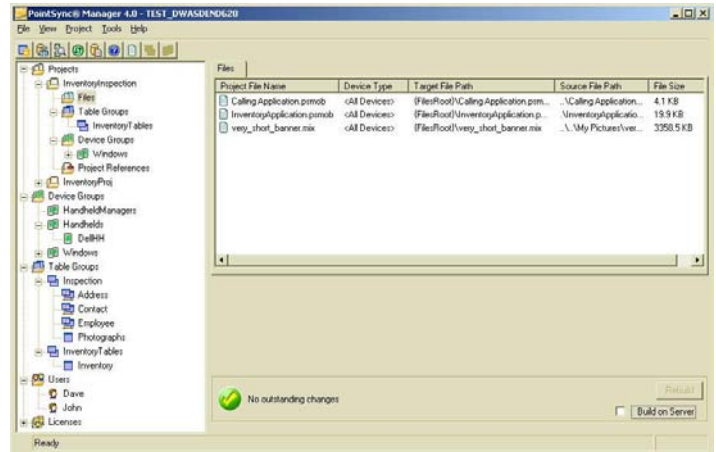
Feature	Benefit
Device Skins	Makes it easy to see how your application will look/work in the chosen device
Robust Application Flexibility /Logic	Take your application to advanced levels with mathematical calculations, data validation, rules-based branching, hardware control, time/date, if-then-statements, variables, system variables and more
240+ Built in Functions	Speeds up development times while giving developers maximum control over their mobile application
Full Set of Screen Controls	Build robust screens with common controls such as buttons, checkboxes, radio buttons, labels, text boxes, drop lists, list controls, tabs, signature capture and more
Built-in Hardware Integration	Allows developers to control hardware such as barcode readers, GPS, RFID readers and digital cameras
Code-Free, Tree Based Design	Tree-based development environment is easier to learn and uses property sheets and right-click to present context sensitive options
Code Debugger	Built-in debugger helps developers locate programming errors quickly
Data Mapping Wizards	Quickly map Drop Lists and List Controls to data exposed in PointSync Manager
Built-in Sync Library	Gives developers full control of synchronization schedule, rules and messages
AppClips	Decreases future development time by saving pieces of code or entire pages

PointSync Mobility Platform Data Sheet – Page 2

PointSync Server automatically.

The **PointSync Mobile** runtime engine is software that provides functionality to field users for collecting data, synchronizing information to and from mobile device databases and validating data input on the device.

These PointSync Mobility Platform components can help you get any paper-based business process mobilized. Start saving money now by reducing data entry work, typing errors and delays in data input to your internal software systems with a mobile platform provided by MobileDataforce.



PointSync Manager Feature Summary

Feature	Benefit
Fully integrated admin console	Configure and control all settings from one explorer style interface
Built-in Backup/Restore	Allows quick manual or scheduled server backups for added piece of mind
Multiple app/database support	Server supports multiple mobile applications, each with their own databases, users, devices and settings
Full control of sync logic	Keep your data synchronizations lean and fast by allowing you to specify exactly which data you want on the devices
Database Manager	Quickly create and view data and schemas of linked and PointSync databases in one place
Device/Table Groups	Allows devices to be organized into groups, along with their respective data
Remote Administration	Allows multiple administrators to control the server from remote locations
Application and file deployment	Automatically deploy the latest mobile application and resource files to mobile devices
ID Pooling	Prevents duplicate record IDs from being created in the field

System Requirements

PointSync® Manager/Developer:

- Intel Pentium® class or AMD-K6® class processor
- 210 MB of available hard disk space; 300 MB recommended
- CD-ROM drive (for CD-based installation)
- Internet connection (to register the software on your first use)
- Microsoft Internet Explorer 5.5 or above
- Operating System: Windows® XP Professional

PointSync® Server/Manager:

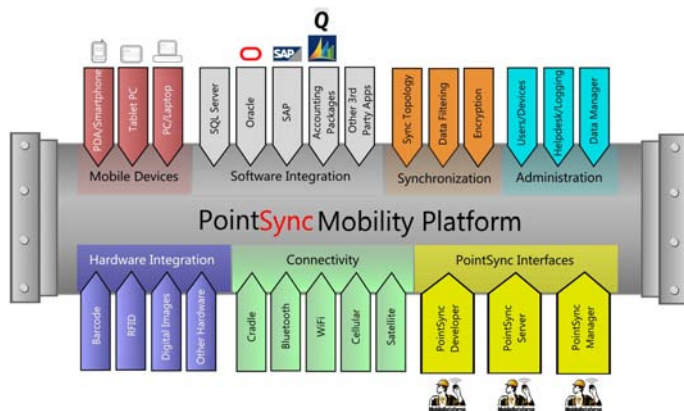
- Intel Pentium® class or AMD K6® class processor
- Requires 30 MB RAM minimum
- 200 MB available hard disk space minimum (depends on amount of data stored)
- Operating System: Windows® XP Professional, Server 2003
- Microsoft Internet Explorer 5.5 or above
- Internet connection (to register the server software when a new PointSync Server is created)
- Minimum of 8 MB Available RAM and 4 KB per client connection (PointSync® Developer requires a client connection + 1 client connection for each connected device)

PointSync® Mobile (includes mobile database):

- Operating System:
 - Windows XP Professional
 - Windows XP Tablet PC
 - Windows CE 4.1*
 - Windows CE 4.2*
 - Windows Mobile CE 5.0*
 - Windows Mobile 5.0 Pocket PC/Phone Edition
 - Windows Mobile 6.0 Standard/Professional
 - Pocket PC 2003 Second Edition
 - Pocket PC 2003 Second Edition Phone Edition
- 16 MB RAM Min
- TCP/IP Internet Connection via Ethernet, WiFi (802.11), Bluetooth, VPN, etc. for synchronization (applications can run offline.)

* Contact your MobileDataforce sales representative for specific hardware device support

The Platform— A Full Set of Robust Features



Contact MobileDataforce

USA Office
 MobileDataforce
 3380 Americana Terrace, Suite 360
 Boise, ID 83706
 United States

EMEA Office
 MobileDataForce Europe BV
 IJsselsingel 42
 5512 CM Den Bosch
 Netherlands

phone: +1-208-384 1200
 email: sales2@mobiledataforce.com

+31-73-6100 722
 eurosales@mobiledataforce.com