

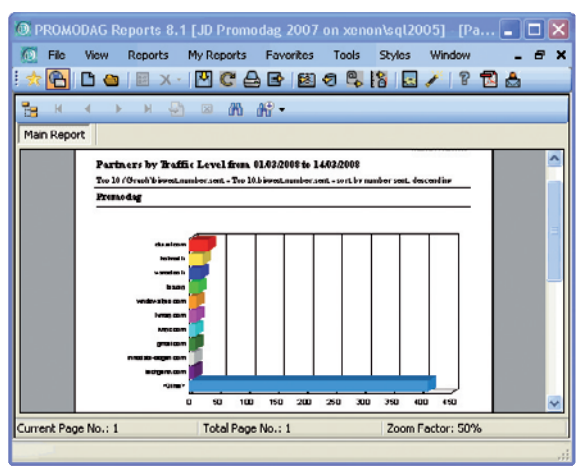
PROMODAG REPORTS

for Microsoft® Exchange Server

Reporting on Exchange made simple

PROMODAG Reports is an advanced and cost-effective reporting tool that enables **Exchange Server administrators** and **IT managers** to obtain valuable information about all aspects of their email system.

With its powerful and easy-to-understand features PROMODAG Reports produces comprehensive reports that you can rely on to ensure better security, business continuity, and to improve Exchange organization performance.



PROMODAG Reports is easy to install and configure. Reports use native Exchange server data sources so there is nothing to install on the server. The product collects and stores the necessary data into an Access or SQL Server database. You can choose from over 80 ready made reports and publish them to various destinations in different formats. All operations can be easily automated and scheduled so you can set up the product and forget about it.

- **Pricing** is per analyzed server, no matter how many mailboxes you have.
- **Agentless** with nothing to install on the Exchange server.
- **Easy** to install and configure, a standard workstation is all you need.
- **Supports** all versions of Exchange server.
- **More than 80 reports** with multiple options.
- **Traffic and content reports** down to the message level.
- **Outlook Web Access** reports.
- **Mailbox** and public folder content reports.
- **Information store size** reports.

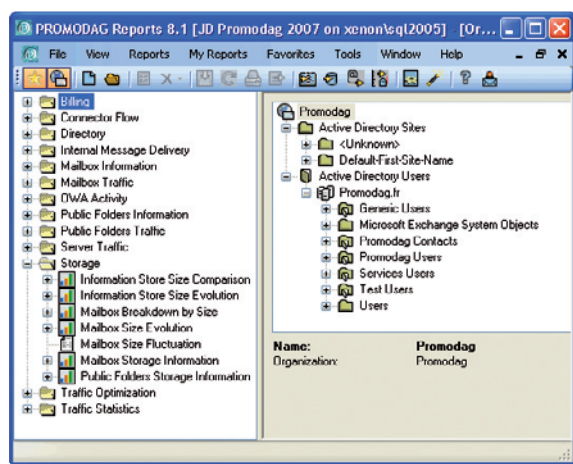
Reports

- **Mailbox traffic** reports let you see in detail with whom your users are corresponding, and the kind of messages they exchange. Mailboxes can be grouped by Active Directory attributes such as server, department, manager...
- **Traffic statistics** reports produce graphs showing traffic breakdown by days, hours, size of messages or number of recipients.
- **Storage** reports show you how your storage capacity is used and how it changes over time.
- **Mailbox content analysis** reports reveal what users are storing in their mailbox, e.g. attachments. You can group items by age to point out what could be archived.
- **Public folders** reports let you get a clear picture of who uses them, when and for what purpose.
- **Server traffic** reports display the type of traffic processed by servers.
- **Outlook Web Access** reports show who is using web mail and when.
- **Delivery** reports help you measure your service level agreement by calculating internal message delivery time.
- **Billing** reports allow chargeback based on mailbox storage size or message traffic for mailboxes grouped by server, department, etc.

Key features

The product is designed for simple, convenient, and effective user interaction.

- Reports come in tabular or graphical format with many configuration options to suit specific information requirements.
- Reports can be exported to different formats: HTML, PDF, XLS, CSV, RTF, MHT.
- Reports can be sent by email, published in a public folder, a Web site or to a SharePoint document library.
- Individual mailbox reports can be automatically sent to the user or manager.
- Reports options can be saved for instant access using the Favorites menu.
- Mailboxes can be selected based on various Active Directory attributes (server, OU, department...).
- Reporting period can be restricted to specific days or business hours.
- Data collection, report generation, export and publication may be automated and scheduled.
- Data repository can be an Access or SQL Server database.



Benefits

- **Find out** how, when and by whom the system is used or misused.
- **Prevent** email and business process-related problems from occurring.
- **Check** compliance with organizational policies.
- **Optimize** system configuration and design in response to changing traffic patterns.
- **Plan** development based on a reliable understanding of electronic mail usage and needs.
- **Chargeback** system usage based on email traffic or storage size.
- **Ensure** you are meeting your Service Level Agreement.

International language support

The product is available in English, German and French. Reports can also be generated in Spanish, Italian, Dutch and Portuguese.

Licensing

The software is licensed per analyzed server. It is available in three editions to meet the needs of all organizations.

Standard for single-server organizations. The data repository is a Microsoft Access database.

Professional for multi-server organizations. The data repository is a Microsoft Access database.

Enterprise for multi-server organizations. The data repository is a Microsoft SQL Server database.

System requirements

- Windows 2000, XP, 2003, Vista, 2008.
- 2 Ghz Pentium Processor.
- 512 MB RAM.
- Microsoft Outlook 2000, XP, 2003, 2007.
- Microsoft SQL Server, 2000, 2005 for the Enterprise edition.

Supported Exchange versions

- 5.5, 2000, 2003, 2007. There is nothing to install on the Exchange Server.



Microsoft
CERTIFIED
Partner

ISV/Software Solutions

Download an evaluation version: www.promodag.com

PROMODAG SA

22 bis rue de la Réunion
75020 Paris
FRANCE

Tel: +33 1 53 27 66 60
Fax: +33 1 53 27 66 59
Email: sales@promodag.com
Web: www.promodag.com

