

MONITOR • MANAGE • CONTROL • MONITOR • MANAGE • CONTROL

ContentKeeper allows organizations to monitor, manage and control staff access to the Internet.

ContentKeeper's Closed Loop Collaborative Filtering™ Technology ensures that ContentKeeper is the world's best web-filtering solution.

ContentKeeper allows organizations to develop and enforce their own Internet acceptable use policies.

ContentKeeper puts management back in control of Internet resources.

ContentKeeper controls access by site, site categories, file types, media types, users, groups, network addresses, time of day etc.

ContentKeeper has both a built-in real-time engine to catch new sites as well as the industry's most up-to-date site control list (with hourly updates).

ContentKeeper can be delivered as installable software or as an appliance, along with its associated hourly update service.

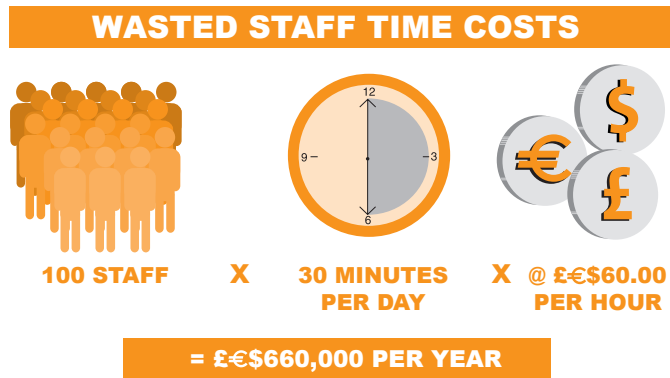
ContentKeeper is designed to fit easily and transparently into large or small networked computing environments.

ContentKeeper Technologies specializes in producing state-of-the-art appliances and software products designed to assist corporate, government and ISP clients to better manage their organization's access to Internet resources.

Staff Productivity – Reduce wasted staff time

How much is non-business related web browsing costing your company today?

For example:
100 STAFF



PORNOGRAPHY



GAMBLING



MUSIC DOWNLOADS



MALICIOUS/VIOLENT



TRAVEL

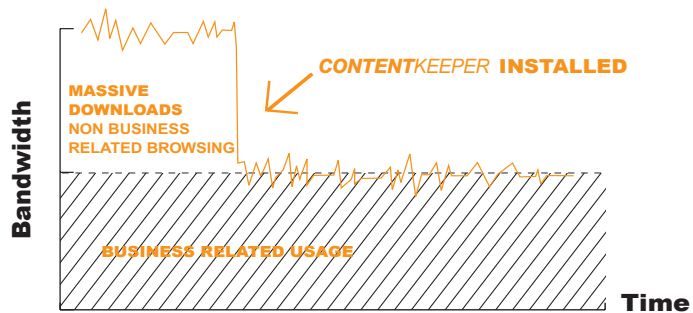


SPORT

Internet Bandwidth – Reduce Internet access costs

How much is non-business related browsing, music file downloads, streaming media, and other file downloads affecting your bandwidth and Internet access?

For example:



- REDUCE INTERNET ACCESS COSTS
- IMPROVE NETWORK RESPONSE
- INCREASE WORKPLACE PRODUCTIVITY

Reduce Legal Exposure – Copyright and Workplace litigation

Resulting from illegal and inappropriate Internet content in the workplace.

Company Reputation – Protect your corporate image

ContentKeeper helps prevent embarrassment to your company caused by accidental or premeditated downloads of child or other pornographic material.

WITH CLOSED LOOP COLLABORATIVE FILTERING™ TECHNOLOGY

MONITOR • MANAGE • CONTROL • MONITOR • MANAGE • CONTROL • MONITOR • MANAGE • CONTROL • MONITOR • MANAGE • CONTROL • MONITOR • MANAGE • CONTROL

ContentKeeper® uses its own patent-pending, industry leading, **Closed-Loop Collaborative Filtering™ Technology** which ensures that the database of non-business related sites is superior in quality and coverage. **ContentKeeper®** also employs AI techniques and the latest in **M.A.R.I.O.™** real time blocking and classification technology to catch new and previously unvisited sites.

Closed Loop Collaborative Filtering™ Technology Global Collection with Hourly Updates



Closed Loop Collaborative Filtering is ContentKeeper's closed circuit system designed to globally collect, analyze, categorize, edit and distribute site URLs worldwide.

ContentKeeper units in the field are designed to call the ContentKeeper Datacentre hourly to receive control list updates of newly discovered and processed URLs. During this process, any new suspect URLs discovered locally, are encoded, encrypted, compressed and sent back to the Datacentre for anonymous submission to our AI, analysis and categorization engines. Sites that are then confirmed to fall into one of the control categories are included in the Control list updates and sent out to every ContentKeeper unit in the field every hour.

Security

- Hack proof transparent ethernet bridge design
- Helps protect against web based Virus attacks

Fail safe design

- Automatic fail-safe High Availability Module (HAM) for critical network installations (optional)

Browser based Management

- Secure local and remote web browser based management

Scalability by Design

- From small business to high availability, high throughput and load balanced enterprise, carrier/ telco and ISP type environments

Username Resolution/ Authentication via

- IP, NetBios, DNS, Netbios plus DNS, Basic and NTLM proxy authentication

Directory Services Support

- NT4.0 PDC, Active Directory, Windows 2000
- LDAP, NDS, NIS (call)
- Local users and groups database

This is only a subset of features, please see www.contentkeeper.com for a full list of current features

Specifications

ContentKeeper Appliance Device OR Minimum Hardware specifications

Dedicated Intel based PC, 1GHz CPU, 512MB RAM, 10GB HDD, 3 x 10/100MB/Gigabit Ethernet Cards UTP, Keyboard
Please refer to www.contentkeeper.com for supported NIC's

Software requirements

RedHat Linux v7.1, v7.2, v7.3

Optional High Availability Module

Electro-magnetic Ethernet bypass switch.

Please refer to www.contentkeeper.com for current specifications

ContentKeeper is supplied and supported worldwide through a network of resellers and distributors.

ContentKeeper Technologies

Asia Pacific (Headquarters)

218 Northbourne Avenue
Braddon, ACT 2612 Australia

Tel +61 (2) 6261 4950

Fax +61 (2) 6257 9801

info@contentkeeper.com

www.contentkeeper.com

ContentKeeper Technologies Europe

PO Box 7868. Crowthorne, Berkshire
RG45 6XY United Kingdom

Tel +44 (0) 1344 752740

Fax +44 (0) 1344 780332

info@contentkeeper.co.uk

For USA details please visit our website www.contentkeeper.com

Extensive Control List with virtual Real-time Updates

- Database covering millions of classified Internet sites
- Hourly updates using ContentKeeper's Closed Loop Collaborative Filtering™ & TrickleFeed™ technology
- Back-end Datacenter analysis, classification and re-confirmation of site categories

Real-time AI Engine

- Real-time blocking, analysis and classification engine (MARIO™ technology)
- Automatic site tuning - classification and control of non business related sites known to and visited by your staff

Monitor Manage & Control Locally & Instantly

- Blocking – prevents users from accessing non-business related Internet sites
- Warning – displays warning message allowing user to abort or proceed to the Internet site
- Authentication – instant access to classified sites for authorized users
- Time of Day Control – by user, group, site, category or IP address with full subnet masking
- Monitor (silent) mode with full reporting
- Instant block, unblock and re-classify control
- Controls over streaming video and audio, file downloads etc. by file type
- Custom (local) blocking and unblocking lists with multiple wildcards (sites & files)
- White list only access controls per policy
- Customizable blocking screens

Stand Alone System

- Removes filtering load from proxy server/firewall
- Increases speed, reliability, security, ease of installation and management

Reporting - Historical and Real Time

- Web based point & click reporting
- Comprehensive and flexible real time reporting facilities, by sites, by volume, by user with full blocking reports
- Historical Webalizer text and graphic based reporting
- Multiple log file formats for easy web based or SSH/FTP download (ASCII, CSV, Squid, Excel)

Filtering Policies

- Full individual user, groups, objects and IP based policy management per category, site, page, file with online/offline testing and verification facility
- Up to 100 different policies per ContentKeeper to cover an unlimited number of users
- Global and Default policies
- Block, Warn, Authenticate and Time of day control

Easy to Install and Manage

- 15 minute easy installation (at most sites)
- Transparent installation and operation
- Automatic registration and activation
- Automatic control list updates
- Automatic software upgrades
- Automatic site reclassification submission
- Minimal ongoing management requirements
- Instant authenticated browser based user bypass
- Full per-category, and time of day controls
- Full evaluation available via web download
- File download management by file type or site (customizable and extensible)

Compatibility

- Invisible to and compatible with any firewalls, proxy servers, caching and other network devices including Cisco WCCP V1.0 & 2.0
- Network Operating System (NOS) independent

